

Highly Customizable Stanchions and Accessories for the Entire Casino



- ▶ **Maintain large crowds** on gaming floors, cashier lines, nightclubs, lobbies, restaurants & more.
- ▶ **Extremely durable** and resistant to tough wear & tear.
- ▶ Standard **10 year warranty** on almost every product.
- ▶ **True American manufacturing quality standards.**

RETRACTA-BELT[®] Stanchions



Typical Uses:

- ▶ Organize cashier queue lines on gaming floors.
- ▶ Create a defined buffet line in restaurants.
- ▶ Safely organize lines at night club entrances.
- ▶ Cordon off closed elevators, restricted walking paths.



- ▶ **Choose your belt length:** from 10' - 30'.
- ▶ **Custom belt printing:** of nearly any design or logo.
- ▶ **Exclusive EVERstraight[®] Technology base connection:** ensures the post remains straight for the life of the post.
- ▶ **Match posts to your decor:** Hundreds of finishes available.
- ▶ **Mounting options:** for semi-permanent or permanent posts.
- ▶ **Outdoor capable:** Weather-Protection available.

Conventional Post & Ropes



Typical Uses:

- ▶ Designate VIP tables and sections on the gaming floor.
- ▶ Enhance the appearance of nightclub VIP sections.
- ▶ Cordon off expensive jackpot prizes in busy areas.
- ▶ Restaurants, amenities and entertainment queues.



- ▶ **Fully customizable:** mix and match three post top styles, three base styles and hundreds of finish options.
- ▶ **Heavy cotton-core ropes:** the highest quality on the market for an elegant swag and premium look and feel. Five rope coverings available to match your decor.
- ▶ **Rope printing:** available on Dye-Sub microfiber ropes for branding, logos and patterns.
- ▶ **Outdoor capable:** Weather-Protection available.

This is a sample of our product line. All products shown here offer a variety of options, upgrades and accessories. Visit our website or call for more details on individual product offerings and our full line.

Signs and Sign Stands

Typical Uses:

- ▶ Displaying gaming rules and regulations on the casino floor.
- ▶ Promoting amenities, clubs, shows, restaurants, etc.



- ▶ **Dozens of signage options:** post mount signage, frames, freestanding sign stands, wall mount signs and more.
- ▶ **Outdoor capable:** weatherproof signage available.
- ▶ **Stand out in crowds:** heights up to 92" for maximum visibility.
- ▶ **Match your decor:** hundreds of finishes available.
- ▶ **Easy Transport:** wheels available on many sign stand models.

Utility Posts and Wall Mount Units

Typical Uses:

- ▶ Back end safety — warehouses, construction areas, etc.
- ▶ Maintenance — closing bathrooms, elevators, etc.



- ▶ **Choose your belt length:** from 10' - 65'.
- ▶ **Extremely durable and rugged outdoor-rated materials:** suitable for the roughest environments.
- ▶ **Belt and mounting options on Wall Mounts:** use your unit on nearly any surface for any application.
- ▶ **Integrate signage or printed belts:** for enhanced safety and warning messages (ie: DO NOT ENTER).

Accessories and Upgrades



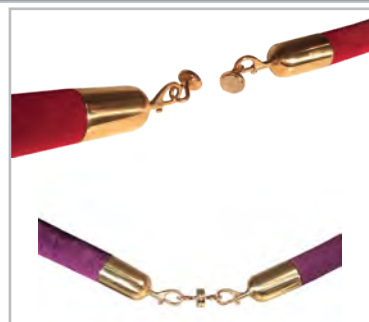
Post-N-Panels



Storage Carts



Belt & Rope Printing



Magnetic Breakaways

PRODUCT FOCUS: MINI-SOCKET Stanchions — The Crowd Control Solution for your Casino

A Visiontron Exclusive

Replace Portable Posts with sleek **MINI-SOCKET** Base Mounted **RETRACTA-BELT®** or Conventional Posts.

Small Socket, Quick Installation

- ▶ 'Baseless' design maximizes queue width for a larger space and reduces tripping hazard.
- ▶ Simply unscrew posts to change queue layout.
- ▶ Keeps queue lines in place with minimal impact to floors.
- ▶ Belt lengths from 10' - 30'.

