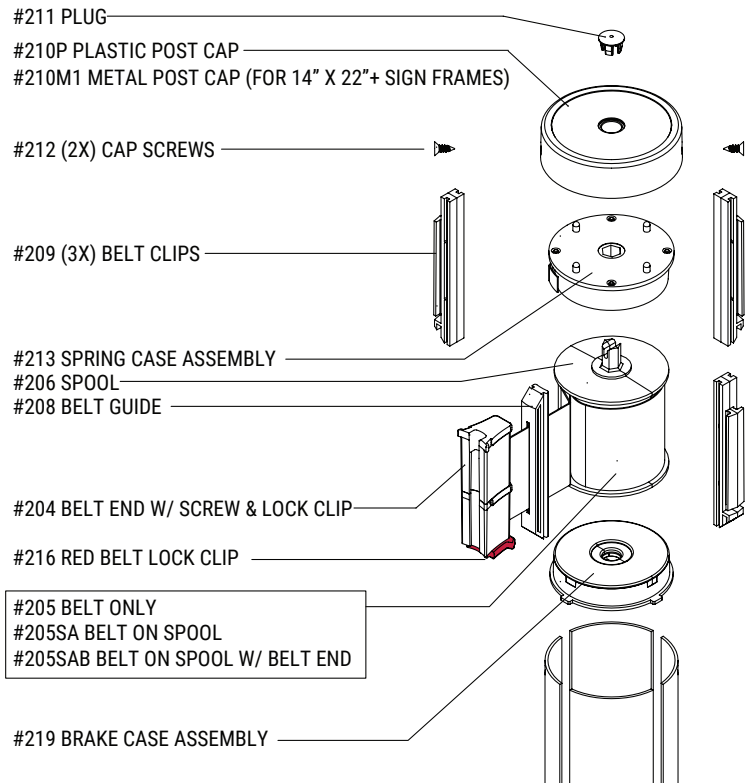


REPLACEMENT INSTRUCTIONS

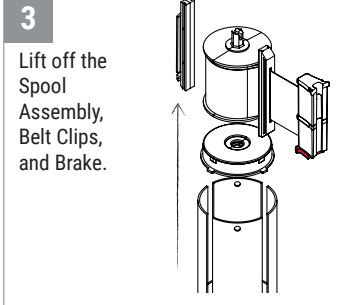
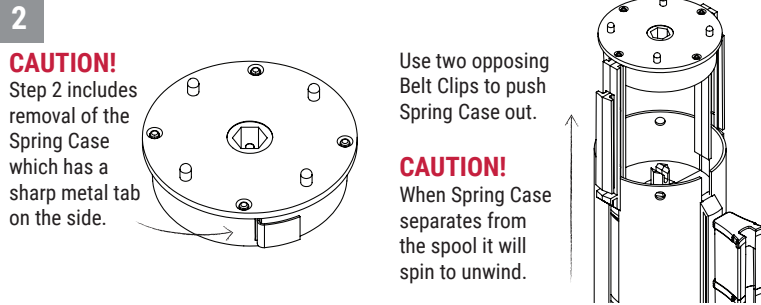
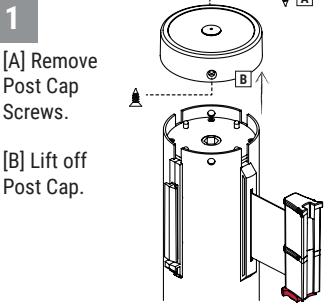
RETRACTA-BELT® 300 Series

G3 Assembly

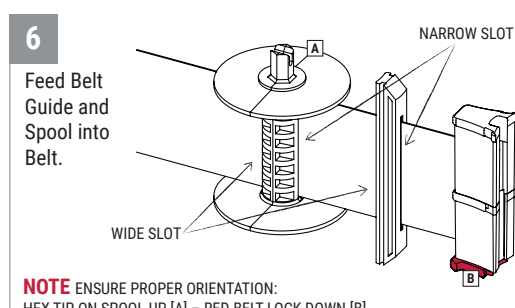
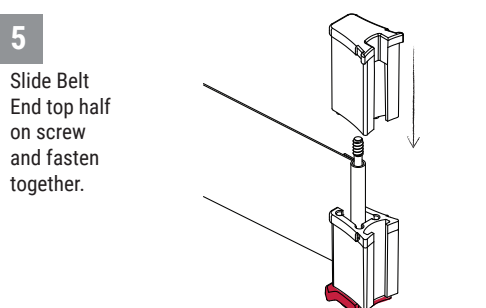
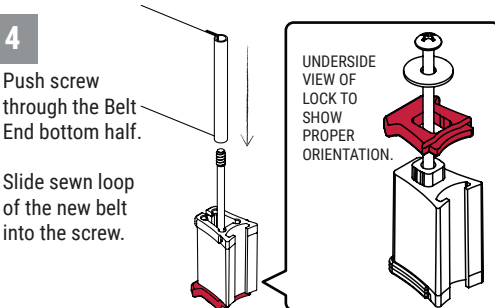
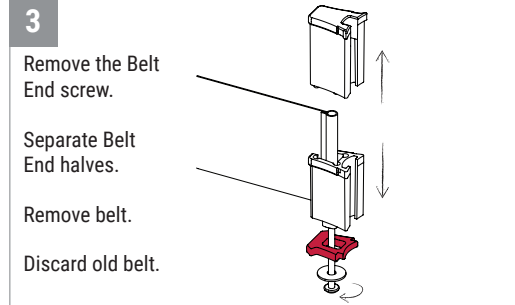
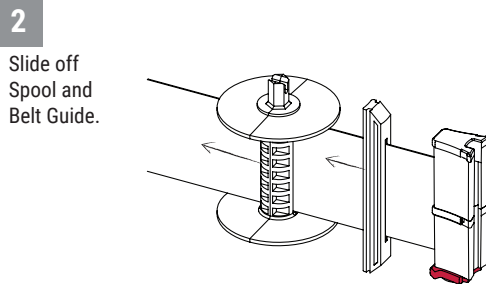
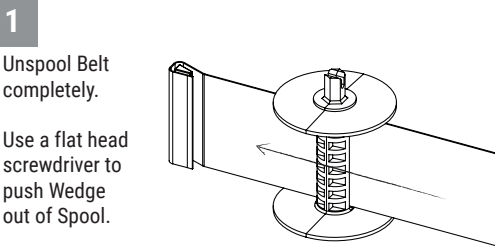
You will need a Phillips Head Screw Driver and a Flat Head Screw Driver (if replacing the belt). (NOT INCLUDED)



DISASSEMBLY INSTRUCTIONS



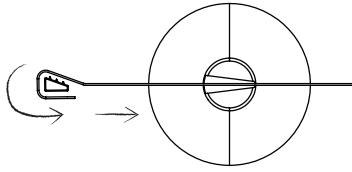
OPTIONAL: REPLACE THE BELT



OPTIONAL: REPLACE THE BELT (CONTINUED)

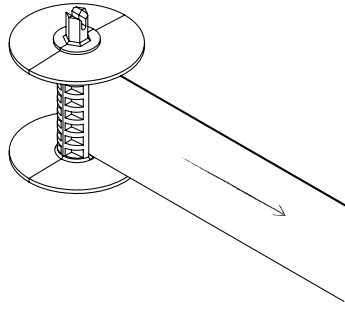
7

Fold new Belt around the wedge and push back into Spool.



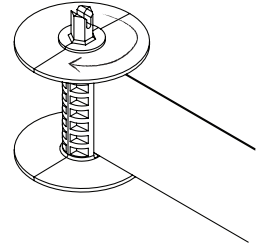
8

Pull on new Belt to lock wedge in place.



9

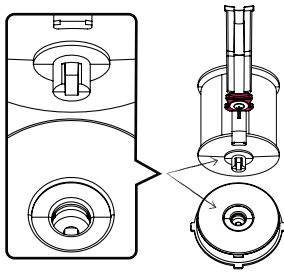
Rotate Spool **CLOCKWISE** to spool Belt snug, but do not over tighten.



ASSEMBLY INSTRUCTIONS

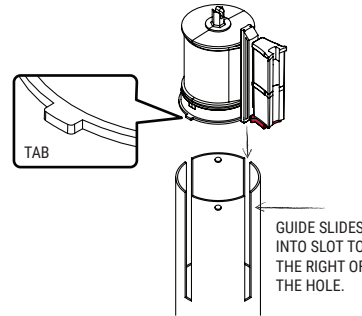
1

Align the notch under the Spool with the tab inside the Brake. Press together to connect.



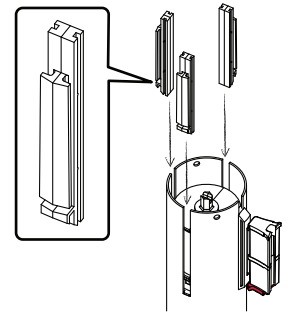
2

Align the 4 tabs on the Brake with the 4 slots. Simultaneously, align the Belt Guide on the slot to the right of a screw hole.



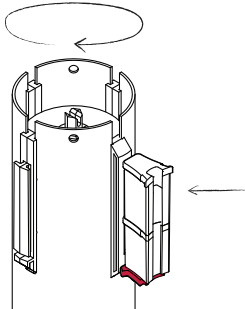
3

Slide Belt Clips into slots on Post. Push clips down completely.



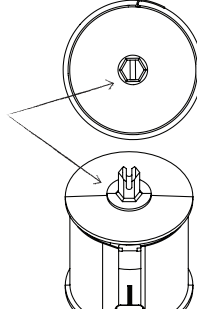
4

Spool up Belt **CLOCKWISE** to remove any slack outside of Post.

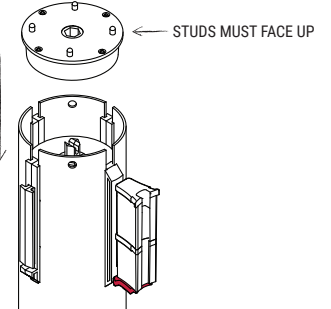


5

Align Spring Case pin with the slot on the Spool.

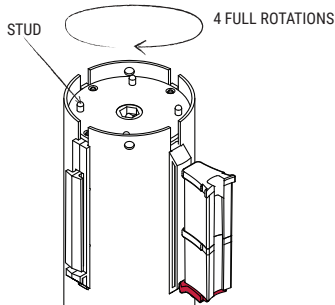


Press down Spring Case onto Spool to connect.



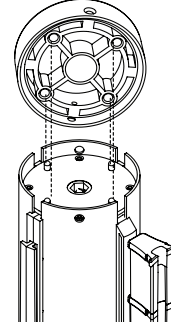
6

Use the studs to rotate the Spring Case **CLOCKWISE** 4 full rotations or 16 clicks.

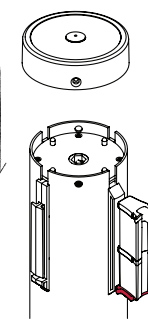


7

Aligning studs on spring case with holes in Post Cap.



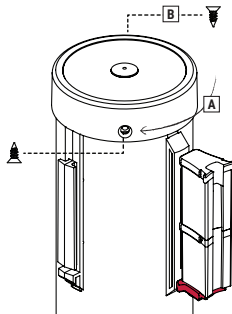
Press Post Cap onto Spring Case until flush with Belt Clips.



8

[A] If necessary, rotate Post Cap **CLOCKWISE** to align screw holes.

[B] Install Post Cap screws.



Should you require assistance, please call a People Guidance Pro at **631-582-8600**.