

### Materials Needed

- Spackle knife or extendable scraper (to break the tape bond)
- Hammer
- 4' crowbar
- Sharp scraper blade
- Mineral spirits or citrus adhesive remover
- Mild soap and water
- Soft cloths
- Gloves and eye protection

### Suggested tools:

- Husky 3 in. Bent Extendable Scraper with Stainless Steel Blade
- Wal-Board Tools 6 in. Hammer End Joint Knife
- Husky 4 in. Metal Wall Scraper

### Step 1: Break the VHB Tape Bond

To remove the plates, insert a spackle knife or scraper blade at the edge of the plate.

#### Using light hammer taps:

1. Work the blade beneath the plate
2. Gradually break the VHB tape seal
3. Move around the perimeter rather than forcing one spot

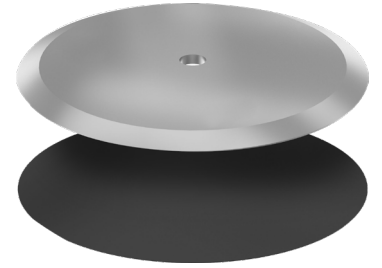
*The objective is to separate the adhesive bond, not pry the plate off immediately.*

### Step 2: Remove the Plate

#### Once the adhesive bond has been loosened:

1. Insert a 4' crowbar beneath the plate
2. Apply steady pressure
3. Lift until the plate releases

*Work evenly to minimize stress on the flooring surface.*



### Step 3: Remove Remaining Tape

After plate removal:

- Use a sharp scraper blade at a shallow angle
- Remove remaining tape material mechanically

*This process typically removes approximately 90% of the tape residue.*

### Step 4: Remove Residual Adhesive Film

A thin adhesive film may remain after scraping. Apply mineral spirits, or citrus adhesive remover.

#### Instructions:

1. Apply using a cloth
2. Allow brief dwell time
3. Wipe clean
4. Repeat as necessary

*Always test cleaners in an inconspicuous area first.*

### Step 5: Final Cleaning

#### Once adhesive has been removed:

1. Clean the area with mild soap and water
2. Remove any remaining solvent residue
3. Allow the surface to dry completely

#### If visible ghost marks, discoloration, or finish variation remain:

1. Strip the affected floor finish or wax as needed
2. Reapply finish to restore a uniform appearance
3. Blend into surrounding areas to return the floor to a continuous finish

### Important Notes

- Use controlled force throughout removal.
- Maintain a shallow scraper angle to reduce scratching.
- Avoid saturating flooring seams with solvent.
- Flooring finish and condition may affect removal.

SHOULD YOU REQUIRE ASSISTANCE, PLEASE CALL A PEOPLE GUIDANCE PRO AT **631-582-8600**.