

A rugged, no frills barrier for large span applications.

The manual crank design on our outdoor-rated 50' belt Wall Mount **RETRACTA-BELT®** provides an inexpensive option in our mountable barrier product line. But don't let the price fool you. With rugged aluminum construction and minimal moving parts, this barrier is built to last in rough and abusive environments. Belt tension is adjusted and locked in place with the manual crank handle providing a taught and secure barrier. This retractable belt unit requires heavy duty receiving ends (*Model-HDRE sold separately.*)



Manual crank design: locks to provide taught belt barrier.

Aluminum internal and external construction: to last in rugged and abusive applications.

Thick and durable 50' belt: for extremely long span applications. It's the same webbing that's used in all our **RETRACTA-BELT®** units and proven to outlast the competitor's belt.

Customize your unit: by printing your logo or unique safety message on the belt. Custom colors are also available. See reverse side for details.



Heavy Duty Receiving End: screws into walls and securely holds the belt in place.

Model # HDRE
Sold separately.

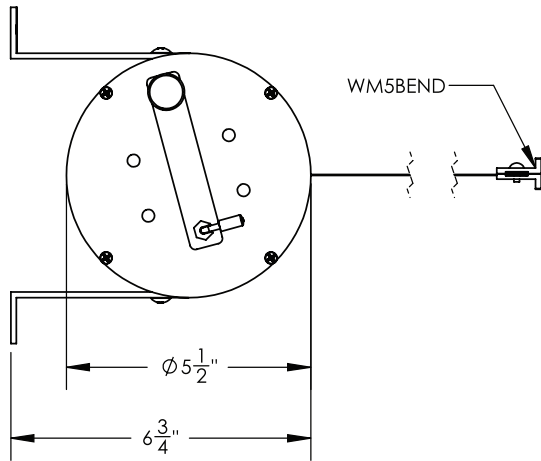
Typical Applications

- ▶ Parking garages
- ▶ Loading docks
- ▶ Driveways
- ▶ Tarmacs

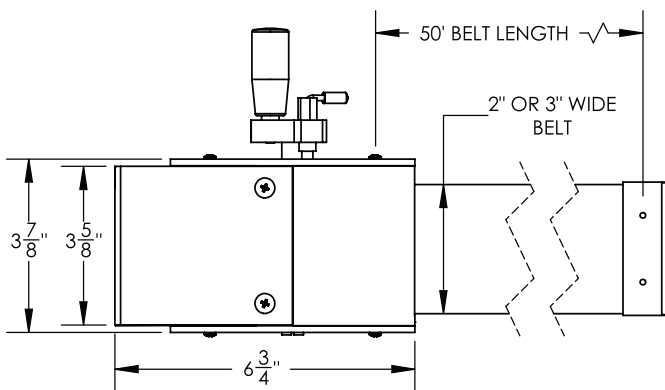
10 Year Warranty.

Model WM5000 Specs

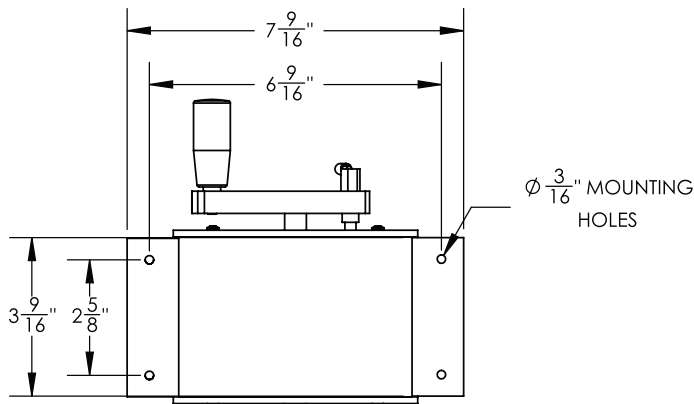
Top View



Side View



Back View



Overall Weight: 10 lbs.

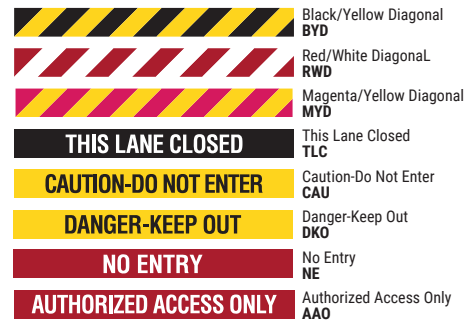
Stock Finishes



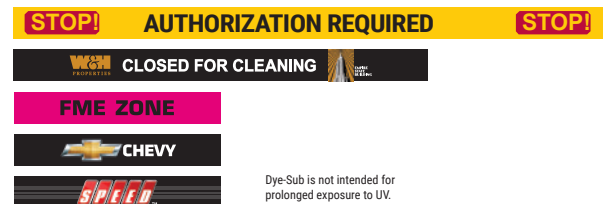
Standard Belt Options



Specialty Belt Options (Double Sided)



Custom Dye-Sub Belt Samples



Due to printing limitations, colors shown may not represent actual product colors. Please call for samples if required.

